

CATEGORIA A

Finta pelle . Simil leather . Similcuir . Kunstleder . Imitacion de piel



A95



A96



A72



A73



A82



A71



A70



A80



A89

CATEGORIA A

TESSUTO . Fabric . Tissu . Stoffe . Tela



A10



A11



A12



A13



A14

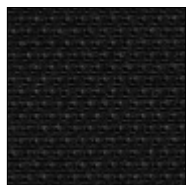
Per poltrona Pasha Art. 660
For armchair Pasha item 660

CATEGORIA B

Nylon . Nylon . Nylon . Nylon . Nylon



B01



B02

I colori sono indicativi . Colours are indicative . Les coloris sont indicatifs . Farben sind Indikativ . Los colores son indicativos .

CATEGORIA C



Finta pelle ignifuga . Fire retardant simil leather . Similcuir non-feu . Feuerhemmender Kunststoff . Imitacion de piel ignifuga



C18



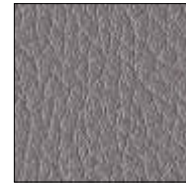
C11



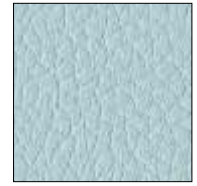
C12



C13



C15



C19



C10



C17



C14



C20



C21



C22



EN 1021 Part 1 & 2
BS 5852 Part 2 - Crib 5
DIN 4102 B2
Classe M1

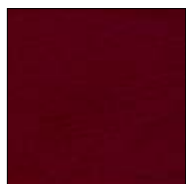
CATEGORIA C



Finta pelle ignifuga . Fire retardant simil leather . Similcuir non-feu . Feuerhemmender Kunststoff . Imitacion de piel ignifuga



C60



C61



C62



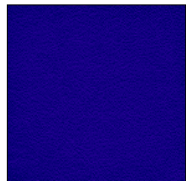
C63



C64



C90



C91



C92



C93



EN 1021-2/93
BS 5852 -1/79, BS 5852/90 - Section 4 - Crib 5
Classe 1

I colori sono indicativi . Colours are indicative . Les coloris sont indicatifs . Farben sind Indikativ . Los colores son indicativos .

CATEGORIA C



Tessuto ignifugo . Fire retardant fabric . Tissu non-feu . Feuerhemmende Stoffe . Tela ignifuga



C50



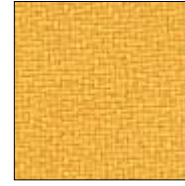
C54



C56



C55



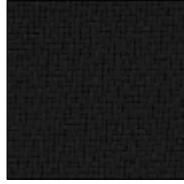
C51



C52



C53



C57

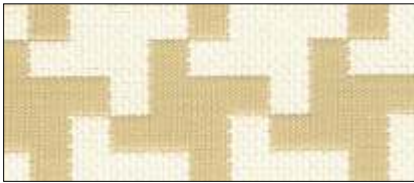


EN 1021 Part 1 e 2
Classe 1
Classe M1
B1 DIN 4102
BS 5852 Crib 5

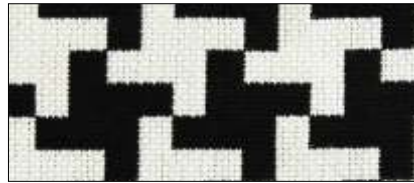
CATEGORIA C-G



Tessuto ignifugo . Fire retardant fabric . Tissu non-feu . Feuerhemmende Stoffe . Tela ignifuga



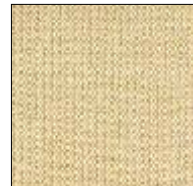
G91



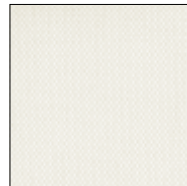
G90



C70



C71



C72



G30



G31



Classe 1
Classe M1
B1 DIN 4102-1

I colori sono indicativi . Colours are indicative . Les coloris sont indicatifs . Farben sind Indikativ . Los colores son indicativos .

CATEGORIA F

Cuoio naturale . Genuine leather . Cuir naturel . Natural Leder . Cuero natural



F05



F01



F04



F03



F06



F07



F08

CATEGORIA F

Cuoio rigenerato . Regenerated leather . Cuir reconstitué . Lederfaserstoff . Regenerado de cuero



F11



F12



F13



F17



F18



F19

I colori sono indicativi . Colours are indicative . Les coloris sont indicatifs . Farben sind Indikativ . Los colores son indicativos .

CATEGORIA G



Tessuto ignifugo . Fire retardant fabric . Tissu non-feu . Feuerhemmende Stoffe . Tela ignifuga



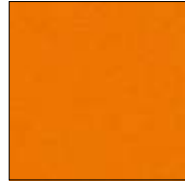
G07



G06



G01



G04



G08



G10



G09



BS EN 1021
DIN 4102
Cal. Tech. Bull. 117
BS 5852 ig. s. 5

CATEGORIA G



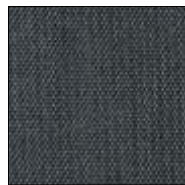
Tessuto ignifugo . Fire retardant fabric . Tissu non-feu . Feuerhemmende Stoffe . Tela ignifuga



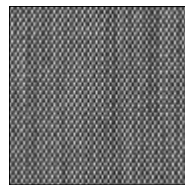
G60



G61



G62



G63



G64



G65



G66



G70



G71



G72



G73



G74



G75



BS 5852, ig. s. 2-3
DIN 4102 B2
EN 1021-1/2
IMO A.652(16)
UNI 9175, classe 1
US Cal. Tech. Bull. 117

I colori sono indicativi . Colours are indicative . Les coloris sont indicatifs . Farben sind Indikativ . Los colores son indicativos .

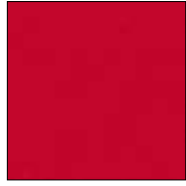
CATEGORIA H



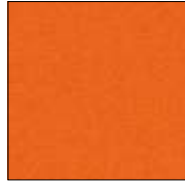
Lana ignifuga . Fire retardant wool . Laine non-feu . Feuerhemmende Wolle . Lana ignifuga



H10



H11



H12



H13



H14



H15



Classe 1
BS 5852 Part 1 0,1
BS EN 1021 1&2
Calif. Bull. 117E

CATEGORIA H



Finta pelle ignifuga . Fire retardant simil leather . Similcuir non-feu . Feuerhemmender Kunststoff . Imitacion de piel ignifuga



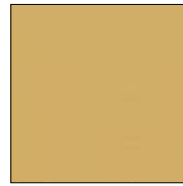
H30



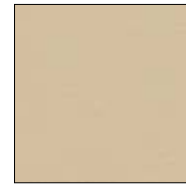
H29



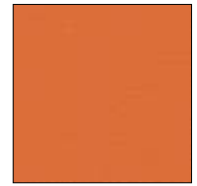
H31



H28



H27



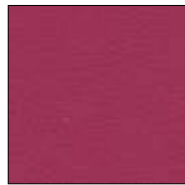
H24



H22



H32



H23



H21



H20



H26



H33



H34



IMO Res. A.652(16)/89
EN 1021-2/93
BS 5852-1/79, BS 5852/90 Section 4 - Crib 5
Classe 1

I colori sono indicativi . Colours are indicative . Les coloris sont indicatifs . Farben sind Indikativ . Los colores son indicativos .

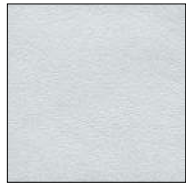
CATEGORIA H Metal



Finta pelle ignifuga . Fire retardant simil leather . Similcuir non-feu . Feuerhemmender Kunststoff . Imitacion de piel ignifuga



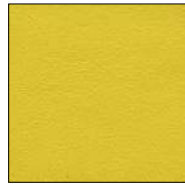
H80



H81



H82



H83



H84



H85



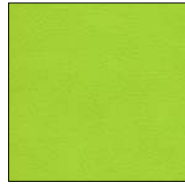
H86



H87



H88



H89



H90



IMO Res. A.652(16)/89
EN 1021-2/93
BS 5852-1/79, BS 5852/90 Section 4 - Crib 5
Classe 1

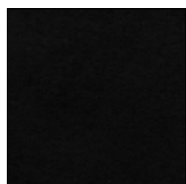
CATEGORIA H



Velluto ignifugo . Fire retardant velvet . Velours non-feu . Feuerhemmende velvetine . Terciopelo ignifugo



H40



H41



H42



H43



H44



H45



H46



H47



H48



H49



H50



H51



H52



H53



IMO Res. A.652(16)/89, IMO Res. A.471(XII)
DIN 4102 Parte 1 Classe B1
DIN 4102 Classe M1
UNI 9177/87 Classe 1
EN 13773 Classe 1
BS 5852/90
TB117 (2000) Sezione E - Parte 1 - Classe 1

I colori sono indicativi . Colours are indicative. Les coloris sont indicatifs. Farben sind Indikativ. Los colores son indicativos.

CATEGORIA P

Pelle mezzo fiore . Mid grain leather . Cuir mi-fleur . Volleder . Piel media flor



PBI



PNE



PMA



PBE



PRO



PSA



PGR



PTA

I colori sono indicativi . Colours are indicative. Les coloris sont indicatifs. Farben sind Indikativ. Los colores son indicativos.